

## RD2-AD TYPE

### Step-type Double Diaphragm Clamp Coupling

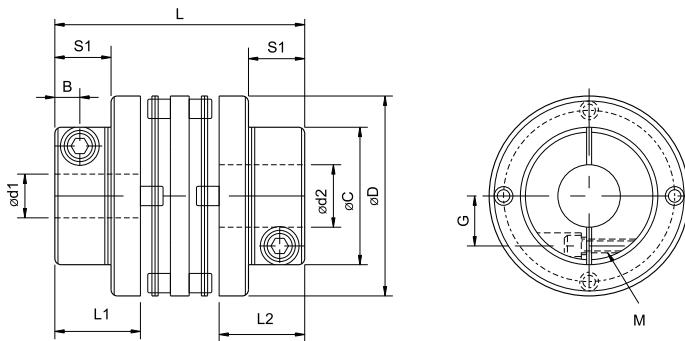


#### Parameters

Model	Rated Torque (N·m)	Max Torque (N·m)	Max Rotational Speed (min-1)	Static Torsional Stiffness (N.m/rad)	Axial Elastic Constant (N/mm)	Moment of Inertia (kg·m <sup>2</sup> )	Parallel Misalignment (mm)	Angular Misalignment (°)	Axial Misalignment (mm)	Weight
RD2-34AD	2.8	4	18000	1600	32	7.33x10 <sup>-6</sup>	0.18	1(单侧)	±0.40	53
RD2-39AD	4.0	6	16000	3200	56	1.15x10 <sup>-5</sup>	0.24	1(单侧)	±0.50	86
RD2-44AD	8.7	10	14000	3900	40	2.95x10 <sup>-5</sup>	0.24	1(单侧)	±0.60	122
RD2-56AD	20	25	11000	9000	24	9.70x10 <sup>-5</sup>	0.28	1(单侧)	±0.80	246
RD2-68AD	55	60	9000	18000	38	2.52x10 <sup>-4</sup>	0.34	1(单侧)	±0.90	440
RD2-82AD	80	100	7000	35000	64	0.99x10 <sup>-3</sup>	0.52	1(单侧)	±1.10	640

\* Moment of Inertia and weight are calculated when the bore is largest.

#### Dimensions



#### Features

- Diaphragm flexible coupling
- Big torque load, high torque stiffness and high sensitivity
- Zero backlash
- Double steel diaphragm compensates parallel, angular and axial misalignment
- The same performance when CW and CCW rotation
- Maintenance-free, oil and corrosion resistance

Unit [mm]

Model	d1 · d2		D	L1 · L2	L	C	S1	B	G	M	Tightening torque [N·m]
	Min	Max									
RD2-34AD	5	10	34	12.4	37.8	21.6	9	3.75	8.0	M3	1.5
RD2-39AD	7	13	39	15.5	48.0	25.6	12	4.5	10.0	M4	3.4
RD2-44AD	8	15	44	15.5	48.0	29.6	12	4.5	11.0	M4	3.4
RD2-56AD	10	20	56	20.5	59.8	38.0	15	6.0	14.5	M5	7.0
RD2-68AD	12	25	68	25.2	73.3	46.0	18	7.75	17.5	M6	14
RD2-82AD	20	30	82	30.0	98.0	56.0	23	9.0	21.5	M8	30

#### Standard Bore

Model	Standard Bore d1 · d2 [mm]													
	5	6	7	8	10	11	12	13	14	15	18	20	25	30
RD2-34AD	●	●	●	●	●									
RD2-39AD			●	●	●	●	●	●						
RD2-44AD				●	●	●	●	●	●	●				
RD2-56AD					●	●	●	●	●	●	●	●		
RD2-68AD							●	●	●	●	●	●	●	
RD2-82AD												●	●	●

\* All couplings are with countersunk bolts.

\* Recommended axial misalignment is h6 or h7.

\* The bore marked "●" in the above table is standard bore. Special bore and keyway size can be customized.

Order Information

**RD2 - 34AD - 8 - 10**

OD ———— Bore Dia:d1-d2

Diaphragm Clamp Type ———— Double Diaphragm