

RD3-E TYPE

Expansion Bushing Bellows Coupling



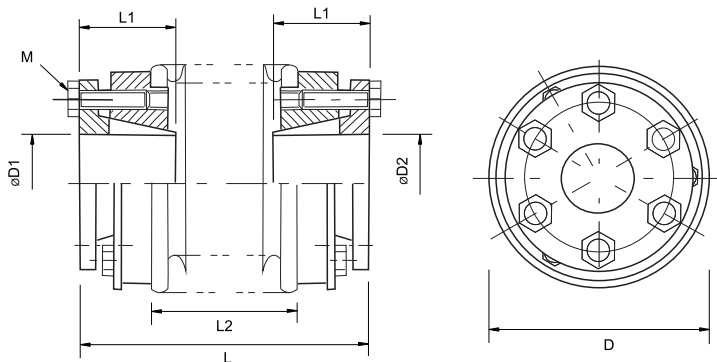
Parameters

Model	Rated Torque (N·m)	Max Torque (N·m)	Max Rotational Speed (min-1)	Moment of Inertia (kg·m ²)	Static Torsional Stiffness (N·m/rad)	Parallel Misalignment (mm)	Angular Misalignment (°)	Axial Misalignment (mm)	Weight
RD3-40E	13	26	8000	9×10 ⁻⁵	1.5×10 ⁴	0.15	2	1.0	210
RD3-55E	28	56	6000	2.9×10 ⁻⁴	3.5×10 ⁴	0.20	2	1.5	400
RD3-65E	56	112	5000	4.6×10 ⁻⁴	6.8×10 ⁴	0.25	2	1.5	790
RD3-82E	120	240	4500	1.1×10 ⁻³	1.2×10 ⁵	0.28	2	1.5	1210

* No need to adjust rated torque and max torque when load capacity changing.

* The above values are got under the max bore.

Dimensions



Features

- Expansion bushing bellow flexible coupling
- Zero backlash, easy dismantle
- Flexible bellow construction compensates parallel, angular and axial misalignment
- The same performance when CW and CCW rotation
- Bellow material: stainless steel

Unit [mm]

Model	d1·d2		D	L	L1	L2	M	Tightening torque [N·m]
	Min	Max						
RD3-40E	10	16	40	55	19	24	M4	3.0
RD3-55E	11	20	55	65	22	31	M4	6.0
RD3-65E	14	28	65	76	27	37	M5	8.0
RD3-82E	19	38	82	88	32	41	M5	10.0

Standard Bore

Model	Standard Bore d1·d2 [mm]						
	10	11	12	14	15	16	
RD3-40E							
RD3-55E							
RD3-65E							
RD3-82E							38

* Special bore and keyway size can be customized.

Order
Information

RD3 - 40E - 10 - 12

Expansion Bushing Type OD Bore Dia:d1·d2