

## RD2-BS-TYPE

### Single Diaphragm Clamp Coupling

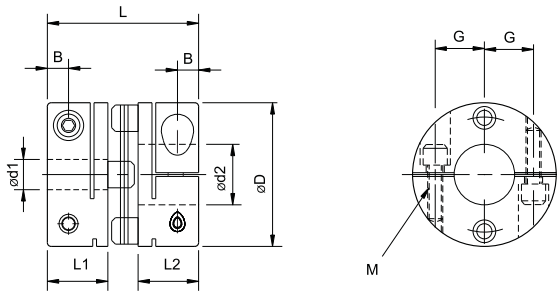


#### Parameters

Model	Rated Torque (N·m)	Max Torque (N·m)	Max Rotational Speed (min-1)	Static Torsional Stiffness (N·m/rad)	Axial Elastic Constant (N/mm)	Moment of Inertia (kg·m <sup>2</sup> )	Parallel Misalignment (mm)	Angular Misalignment (°)	Axial Misalignment (mm)	Weight
RD2-26BS	1.4	2.8	24000	1600	64	2.36×10 <sup>-6</sup>	0.2	1	±0.15	25
RD2-34BS	2.8	4	18000	2500	64	8.12×10 <sup>-6</sup>	0.2	1	±0.20	49
RD2-39BS	4.0	6	16000	4600	112	1.84×10 <sup>-5</sup>	0.2	1	±0.25	84
RD2-44BS	8.7	10	14000	6000	80	2.95×10 <sup>-5</sup>	0.2	1	±0.30	105
RD2-56BS	20	25	11000	14000	48	9.93×10 <sup>-5</sup>	0.2	1	±0.40	214
RD2-68BS	55	60	9000	25000	76	2.69×10 <sup>-4</sup>	0.2	1	±0.45	396
RD2-82BS	80	100	7000	42000	128	7.09×10 <sup>-4</sup>	0.2	1	±0.55	727
RD2-94BS	150	180	6000	55000	108	1.23×10 <sup>-3</sup>	0.2	1	±0.65	959

\* Moment of Inertia and weight are calculated when the bore is largest.

#### Dimensions



#### Features

- Diaphragm flexible coupling
- Big torque load, high torque stiffness and high sensitivity
- Zero backlash
- Short length, compact size
- Single steel diaphragm compensates angular and axial misalignment
- Can not compensate parallel misalignment
- The same performance when CW and CCW rotation
- Maintenance-free, oil and corrosion resistance

Unit [mm]

Model	d1 · d2		D	L1 · L2	L	B	G	M	Tightening torque [N·m]
	Min	Max							
RD2-26BS	5	10	26	10.75	23.15	3.3	9.5	M2.5	1.0
RD2-34BS	8	14	34	12.4	27.3	3.75	12.5	M3	1.5
RD2-39BS	10	16	39	15.5	34.0	4.5	14	M4	3.4
RD2-44BS	10	19	44	15.5	34.0	4.5	17	M4	3.4
RD2-56BS	14	25	56	20.5	43.4	6.0	22	M5	7.0
RD2-68BS	19	35	68	25.2	53.6	7.75	26.5	M6	14
RD2-82BS	24	40	82	30.0	68.0	9.0	28	M8	30
RD2-94BS	30	45	94	30.0	68.3	9.0	34	M8	30

#### Standard Bore

Model	Standard Bore d1 · d2 [mm]																				
	5	8	9	10	11	12	14	15	16	18	19	20	22	24	25	28	30	35	40	45	
RD2-26BS	●	●	●	●																	
RD2-34BS		●	●	●	●	●	●														
RD2-39BS				●	●	●	●	●	●												
RD2-44BS				●	●	●	●	●	●	●	●										
RD2-56BS							●	●	●	●	●	●	●	●	●						
RD2-68BS											●	●	●	●	●	●	●	●	●		
RD2-82BS														●	●	●	●	●	●	●	●
RD2-94BS																	●	●	●	●	●

\* All couplings are with countersunk bolts.

\* Recommended axial misalignment is h6 or h7.

\* The bore marked "●" in the above table is standard bore. Special bore and keyway size can be customized.

Order Information

**RD2 - 34BS - 10 - 12**

OD ————  
Diaphragm Clamp Type ———— Single Diaphragm Bore Dia: d1-d2